

Immunohistochemistry

MAX-Line



MAX-Line ready-to-use antibodies

Cost-effective antibodies for your routine immunohistochemistry

In the day-to-day routine of the immunohistochemistry laboratory ready-to-use antibodies are often a convenient but expensive alternative to concentrated formats. This isn't necessary!

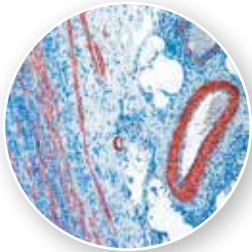
You are looking for ready-to-use antibodies meeting your demands concerning costs, quality and suitability for routine? With the new *MAX-Line* Zytomed Systems offers a convenient solution by providing 16 ml ready-to-use and cost-effective antibodies.

Your advantages:

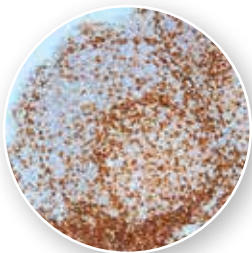
- ▶ High-volume ready-to-use antibodies
- ▶ Low costs
- ▶ Standardised antibody concentration
- ▶ CE/IVD certification for nearly all of these products
- ▶ Broad panel of antibodies available
- ▶ If you wish for more antibodies in this format: just talk to us

▶ Antibodies 16 ml ready-to-use

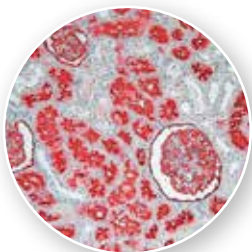
Description	Clone/Isotype	Pre-treatment	Amount	Cat. No.	CE/IVD
Actin (smooth muscle)	1A4/Ms IgG2a	none	16 ml	BMS001	✓
BCL2	Bcl-2-100/Ms IgG2a	Citrate pH 6.0	16 ml	BRB055	✓
Calretinin	polyclonal/Rb IgG	Citrate pH 6.0	16 ml	BRB022	✓
CD3	SP7/Rb IgG	Citrate pH 6.0	16 ml	BRB041	✓
CD4	SP35/Rb IgG	Citrate pH 6.0	16 ml	BRB042	✓
CD8	SP16/Rb IgG	Citrate pH 6.0	16 ml	BRB036	✓
CD10 (CALLA)	56C6/Ms IgG1	Citrate pH 6.0	16 ml	BMS043	✓
CD20	L26/Ms IgG2a	optional: HIER	16 ml	BMS003	✓
CD31	JC70/Ms IgG1	Citrate pH 6.0	16 ml	BMS044	✓
CD34	QBEnd/10/Ms IgG1	optional: HIER	16 ml	BMS045	✓
CD45 (LCA)	PD7/26 & 2B11/Ms IgG1	Citrate pH 6.0	16 ml	BMS046	✓
CD56	RCD56/Rb IgG	EDTA pH 9.0	16 ml	BRB039	✓
CD79a	JCB117/Ms IgG1	Citrate pH 6.0	16 ml	BMS005	✓
CDX-2	EPR2764Y/Rb IgG	Citrate pH 6.0	16 ml	BRB028	✓
CEA	Col-1/Ms IgG2a	none	16 ml	BMS029	✓
Chromogranin A	LK2H10/Ms IgG1	optional: HIER	16 ml	BMS018	✓
Cytokeratin 5/6	D5/16B4/Ms IgG1	Citrate pH 6.0	16 ml	BMS017	✓
Cytokeratin 5/14	XM26 & LL002/Ms IgG1 & IgG3	Citrate pH 6.0	16 ml	BMS023	✓



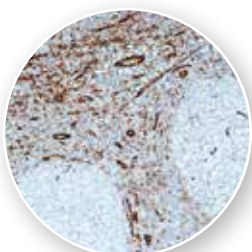
Actin SM (BMS001) appendix



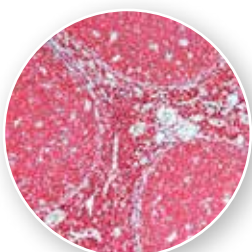
CD4 (BRB042) tonsil



CD10 (BMS043) kidney



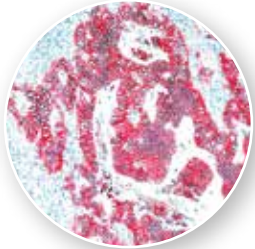
CD31 (BMS044) tonsil



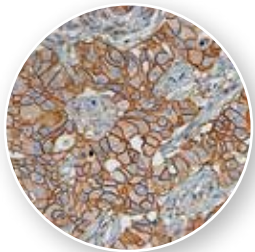
CD45 (BMS046) tonsil

Immunohistology

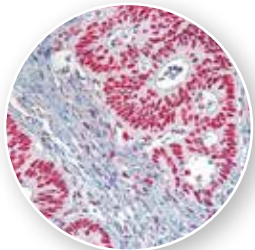
MAX-Line



Ep-CAM (BMS048) colon carcinoma



HER2 (BMS014) breast carcinoma



MSH2 (BMS034) colon carcinoma



p40 (BMS050) prostate carcinoma



P504S (BRB035) prostate carcinoma

Description	Clone/Isotype	Pre-treatment	Amount	Cat. No.	CE/IVD
Cytokeratin 7	OV-TL 12/30/Ms IgG1	Citrate pH 6.0	16 ml	BMS030	✓
Cytokeratin 20	Ks20.8/Ms IgG2a	Trypsin or Pepsin	16 ml	BMS037	✓
Cytokeratin HMW (Basal-Cell CK)	34βE12/Ms IgG1	Citrate pH 6.0	16 ml	BMS015	✓
Cytokeratin pan	AE1 & AE3/Ms IgG1	Citrate pH 6.0	16 ml	BMS006	✓
Desmin	D33/Ms IgG1	Citrate pH 6.0	16 ml	BMS007	✓
E-Cadherin (CD324)	EP700Y/Rb IgG	Citrate pH 6.0	16 ml	BRB047	✓
Epithelial Specific Antigen (Ep-CAM)	Ber-EP4/Ms IgG1	Citrate pH 6.0	16 ml	BMS048	✓
ER	SP1/Rb IgG	Citrate pH 6.0	16 ml	BRB053	✓
GATA3	L50-823/Ms IgG1	Citrate pH 6.0	16 ml	BMS054	-
GLUT1	polyclonal/Rb Ig	Citrate pH 6.0 or EDTA pH 9.0	16 ml	BRB049	✓
Helicobacter pylori	polyclonal/Rb IgG	Citrate pH 6.0	16 ml	BRB032	✓
HER2/neu	CB11/Ms IgG1	Citrate pH 6.0	16 ml	BMS014	✓
Ki-67	K-2	Citrate pH 6.0	16 ml	BMS009	✓
Ki-67	SP6/Rb IgG	Citrate pH 6.0	16 ml	BRB040	✓
Melanoma	HMB45/Ms IgG1	Citrate pH 6.0	16 ml	BMS010	✓
MLH1	G168-15/Ms IgG1	Citrate pH 6.0	16 ml	BMS033	✓
MSH2	FE11/Ms IgG1	Citrate pH 6.0	16 ml	BMS034	✓
p40	BC28/Ms IgG1	Citrate pH 6.0	16 ml	BMS050	✓
p63	4A4/Ms IgG2a	Citrate pH 6.0 or EDTA pH 9.0	16 ml	BMS052	-
P504S	polyclonal/Rb Ig	EDTA pH 9.0	16 ml	BRB035	-
Pan Basal-Cocktail (p63 & CK5/14)	4A4 & XM26 & LL002/Ms IgG2a & Ms IgG1 & Ms IgG3	Citrate pH 6.0	16 ml	BMS051	-
Pan B-Cocktail (CD20 & Pax-5)	L26 & polyclonal/Ms IgG2a, Rb IgG	Citrate pH 6.0 or EDTA pH 9.0	16 ml	BMS026	-
Pax-5	polyclonal/Rb IgG	Citrate pH 6.0	16 ml	BRB027	✓
PR	SP42/Rb IgG	Citrate pH 6.0	16 ml	BRB038	✓
S-100	4C4.9/Ms IgG2a	optional: HIER	16 ml	BMS013	✓
TTF-1	8G7G3/1/Ms IgG1	Citrate pH 6.0	16 ml	BMS016	✓
Vimentin	V9/Ms IgG1	Citrate pH 6.0	16 ml	BMS012	✓