

New CD15 cocktail for enhanced sensitivity for the diagnosis of Hodgkin's disease

More than 90% of all granulocytes, including neutrophil and eosinophil granulocytes, express CD15. Monocytes express CD15 to a lesser degree. Some epithelial cells stain also positive for CD15.

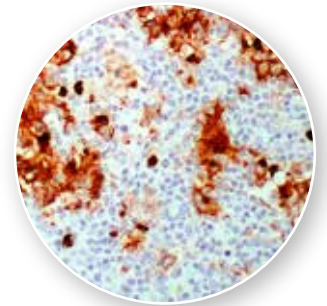
CD15 is detectable on Reed-Sternberg cells, including their rare mononuclear variants and therefore

CD15 immunohistochemistry is used to diagnose Hodgkin's disease. Reed-Sternberg cells of LPHD (lymphocyte-predominant Hodgkin's disease) are negative for CD15.

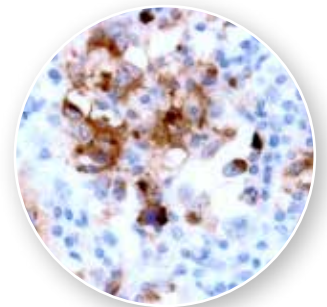
Zytomed System's CD15 is expected to have a higher sensitivity due to two different clones in this antibody cocktail.

► Product information

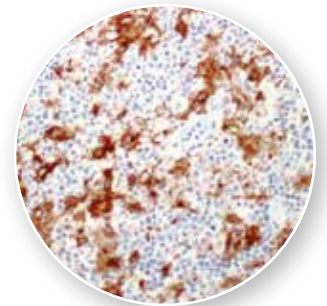
Description	CE/IVD	Method	Form	Dilution	Amount	Cat No
CD15 Clone: MMA + BY87 Host: Mouse Reactivity: HU Pre-treatment: Citrate	✓	P	Ready-to-use	-	6 ml	MSG108
			Concentrate	1:50 - 1:100	0.5 ml	MSK108-05
CD30 (Ki-1) Clone: Ber-H2 Host: Mouse Reactivity: HU Pre-treatment: Citrate	✓	P	Ready-to-use	-	6 ml	MSG061
			Concentrate	1:40-1:80	0.5 ml	MSK061-05
					1 ml	MSK061



CD15 on Hodgkin's Lymphoma (1:100, Citrate pH 6.0)



CD15 on Hodgkin's Lymphoma (1:100, Citrate pH 6.0)



CD15 on Hodgkin's Lymphoma (1:100, Citrate pH 6.0)